

Christmas Bush

Wds: Sonia Bennett & Denis Kevans Mus: Sonia Bennett

Arr. Wayne Richmond

C **3** Verse 1 (Sonia solo) G⁷ C



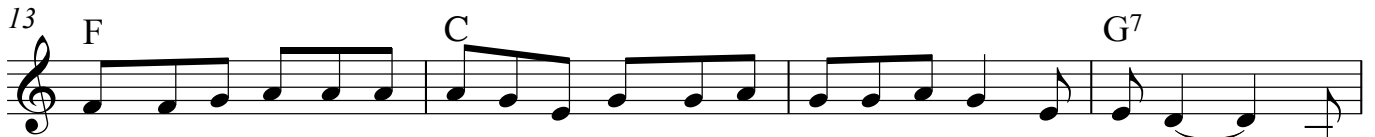
Oh Christ-mas Bush, Oh Christ-mas Bush, how dain-ty are your se-pels,-

9 G⁷ C



Your dis-play I see to-day, Be-side the moun-tain de-vils.---

13 F C G⁷




Christ-mas is com-ing we hear-the drum-ming of yel-low & green ci-ca-das,--- And

17 C G⁷ C F C G⁷ C F C G⁷



right on cue we no-tice you in your fril-ly red py-ja-mas.. In



24 Verse 2 C G⁷ C



shop-ping mall, the chil-dren ball and the tills are loud-ly ring-ing,--- My heart it sings the



The chil-dren ball and the tills are loud-ly ring-ing,--- The



The tills are loud-ly ring-ing,---



The tills are loud-ly ring-ing,---

29

G⁷

C

F



joy it brings, When the Christ - mas Bush is bloom-ing. — Oh Christ - mas Bush, Oh



joy it brings, When the Christ - mas Bush is bloom-ing. — Oh Christ - mas Bush, Oh



When the Christ - mas Bush is bloom-ing. — Oh Christ - mas Bush, Oh



When the Christ - mas Bush is bloom-ing. — Oh Christ - mas Bush, Oh

33

C

G⁷

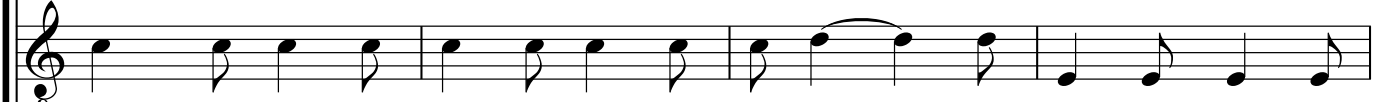
C



Christ - mas Bush, how dain - ty are your pe - tals, — Your cream white flowers they



Christ - mas Bush, how dain - ty are your pe - tals, — Your cream white flowers they



Christ - mas Bush, how dain - ty are your pe - tals, — Your cream white flowers they



Christ - mas Bush, how dain - ty are your pe - tals, — Your cream white flowers they

37

G⁷

C

F

C

G⁷

C

F

C

G⁷



turn to red, and leave just pret-ty se - pals. — Our



turn to red, and leave just pret - ty se - pals. Ah — Our



turn to red, and leave just pret - ty se - pals. Ah — Our



turn to red, and leave just pret - ty se - pals. Ah — Our

Verse 3

43 C G⁷ C

moun-tains are a spec-ial sight, in the heart & haze of sum-mer. And

moun-tains are a spec-ial sight, in the heart & haze of sum-mer. And

moun-tains are a spec-ial sight, in the heart & haze of sum-mer. And

moun-tains are a spec-ial sight, in the heart & haze of sum-mer. And

47 G⁷ C

burs - ting through green can - o - py, the Christ - mas Bush in flow - er. The

burs - ting through green can - o - py, the Christ - mas Bush in flow - er. The

burs - ting through green can - o - py, the Christ - mas Bush in flow - er. The

burs - ting through green can - o - py, the Christ - mas Bush in flow - er. The

51 F C G⁷

glor - i - ous scene you make in the green is a Christ - mas pan - to - mime. All we

glor - i - ous scene you make in the green is a Christ - mas pan - to - mime. All we

glor - i - ous scene you make in the green is a Christ - mas pan - to - mime. All we

glor - i - ous scene you make in the green is a Christ - mas pan - to - mime. All we

55

C

G⁷

C

F

C

G⁷

need is San-ta, in the bush-land pan-ta, In the good ole Christ-mas time.

need is San-ta, in the bush-land pan-ta, In the good ole Christ-mas time. Ah_____

need is San-ta, in the bush-land pan-ta, In the good ole Christ-mas time. Ah_____

need is San-ta, in the bush-land pan-ta, In the good ole Christ-mas time. Ah_____

Verse 4

60

C

F

C

G⁷

C

G⁷

C

O Christ-mas Bush, Oh Christ-mas Bush, how dain-ty are your se-pels, _

O Christ-mas Bush, Oh Christ-mas Bush, how dain-ty are your se-pels, _

O Christ-mas Bush, Oh Christ-mas Bush, how dain-ty are your se-pels, _

O Christ-mas Bush, Oh Christ-mas Bush, how dain-ty are your se-pels, _

66

G⁷

C

F

Your dis-play I see to-day, Be-side the moun-tain de-vils. _ Christ-mas is com-ing we

Your dis-play I see to-day, Be-side the moun-tain de-vils. _ Christ-mas is com-ing we

Your dis-play I see to-day, Be-side the moun-tain de-vils. _ Christ-mas is com-ing we

Your dis-play I see to-day, Be-side the moun-tain de-vils. _ Christ-mas is com-ing we

V.S.

71 C G⁷

hear - the drum-ming of yel - low & green ci - ca - das, And

hear - the drum-ming of yel - low & green ci - ca - das, And

hear - the drum-ming of yel - low & green ci - ca - das, And

hear - the drum-ming of yel - low & green ci - ca - das, And

74 C G⁷

right on cue we no - tice you in your fril - ly red py -

right on cue we no - tice you in your fril - ly red py -

right on cue we no - tice you in your fril - ly red py -

right on cue we no - tice you in your fril - ly red py -

77 C F C G⁷ C F C G⁷ C

ja - mas. Ah

ja - mas. Ah

ja - mas. Ah

ja - mas. Ah

Jig

82 C G⁷ C

86 G⁷ C

90 F C G⁷

94 C G⁷ C F

98 C G⁷ C F | 1. C G⁷ | 2. C G⁷ C